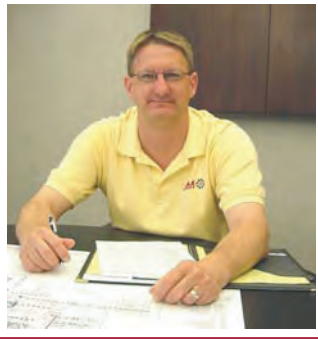


# American Industrial Machinery, Inc.

## The **AIM** "Insider"

Summer, 2007 Edition



AIM ... serving  
customers since 1996!



### SPOTLIGHT ON RICK COPP

A Mechanical Engineer with AIM, Rick will celebrate a milestone as this summer will mark his ten year anniversary at the company. Before joining AIM, Rick was a draftsman/designer and quality control person at a company which reconditioned electrical motors for industrial companies and for public mass transit systems. Rick took night classes at Purdue University Calumet while working full time and graduated with a degree in Mechanical Engineering Technology.

Rick, a Northwest Indiana native, has been married nearly 20 years to his wife, Anne. They have two children, Corey and Kristen, who are ages 16 and 13, respectively. (Yes, a teenage driver in the family is right around the corner!) Over the years, Rick has enjoyed coaching his son's and daughter's sports teams. He is currently serving as a softball coach, but previously has coached baseball, basketball, and soccer.

When he isn't working or spending time with his family, Rick might be found at a local golf course, playing cards with the guys, or managing one of his several fantasy sports teams. Rick is also finishing up his current home project, basement remodeling.

### Major Factors to Consider When Selecting Bearings

It would take much more space than that allotted for this column to address all of the aspects related to bearing selection, so here we'll cover some of the major considerations:

- Determine the live and dead loads placed upon each bearing. Choose the largest loads if loads are not identical, and allow for both radial loads (perpendicular to the bearing bore axis) and axial/thrust loads.
- For each size bearing, manufacturers typically have tables listing load ratings given differing rotational speeds and desired hours of life. (For a given bearing, the load rating is lower with faster rotation and/or if longer bearing life is desired.)
- Also to be considered is the heat associated with the particular application. A high temperature application often requires the use of a different seal material and lubricant which can handle higher heat.

The above items represent just a few of the major factors to consider when selecting a bearing. Once again, we offer our standard disclaimer: Do not try these steps without one of AIM's qualified engineers.

### From the Corner Office by Mike Dolder, President

Consolidation is a word we are seeing with increasing regularity and which triggers simultaneous visions of both opportunity and uncertainty. The opportunity side is that, often, a stronger company emerges when companies join forces by either a buyout or a merger. The uncertainty is that these activities typically result in a reduction of personnel in the engineering, maintenance or production areas. Production and project work continue while the remaining staff is stretched thinner and thinner.

How can AIM help? When providing custom equipment, we are fully capable of proceeding with minimal direction from a customer who has little time to spare. Once we understand equipment performance requirements, process control needs and any interface with existing or other new equipment, we can handle everything else: design, detailing, scheduling, procurement, manufacturing, shop testing and delivery. Being able to handle all of these aspects of the project gives our customers confidence in AIM. This is something of which I am very proud.



American Industrial Machinery, Inc.  
4015 W. 83rd Place, Merrillville, IN 46410  
Voice: (219) 755-4090 / Fax: (219) 755-4091

Email: [info@aimmachinery.com](mailto:info@aimmachinery.com)

Website: [www.aimmachinery.com](http://www.aimmachinery.com)



**American Industrial Machinery, Inc.**  
4015 W. 83rd Place, Merrillville, IN 46410  
Voice: (219) 755-4090 / Fax: (219) 755-4091

Email: [info@aimmachinery.com](mailto:info@aimmachinery.com)  
Website: [www.aimmachinery.com](http://www.aimmachinery.com)

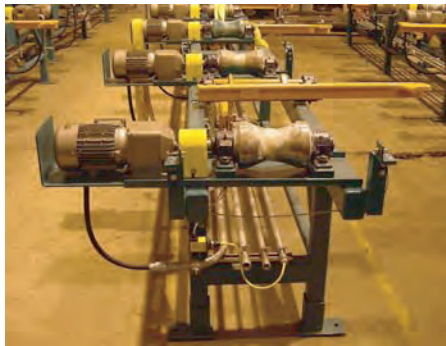
PRE-SORT STD.  
U.S. POSTAGE  
**PAID**  
CROWN POINT, IN  
46307  
PERMIT NO. 473

### *Things you may not know about AIM:*

- ◆ Isaac A. Ruse was recently promoted to Project Engineer. He has been with AIM for just over two years and has a BSME from Purdue University. Congratulations, Ike!
- ◆ In the next few weeks, three additional employees will be joining AIM's staff:
  - Scott Dailey, with a BSME from Rose-Hulman Institute of Technology, will be full-time with the title of Mechanical Engineer,
  - Timothy Clasby, a student at Rose-Hulman, will be a summer intern, and
  - Andy Dolder will work his last summer prior to completing his BSME at Marquette University.

## *The "Insider"*

### **SHOP PHOTOS — A FEW OF AIM'S CURRENT "WORKS IN PROGRESS"**



**Small Diameter Pipe Conveyors—Fabricated, Machined, Fitted-Up, Assembled and Ready for Inspection Prior to Shipment**



**Insulated Pipe Conveyor—Ready for Inspection**